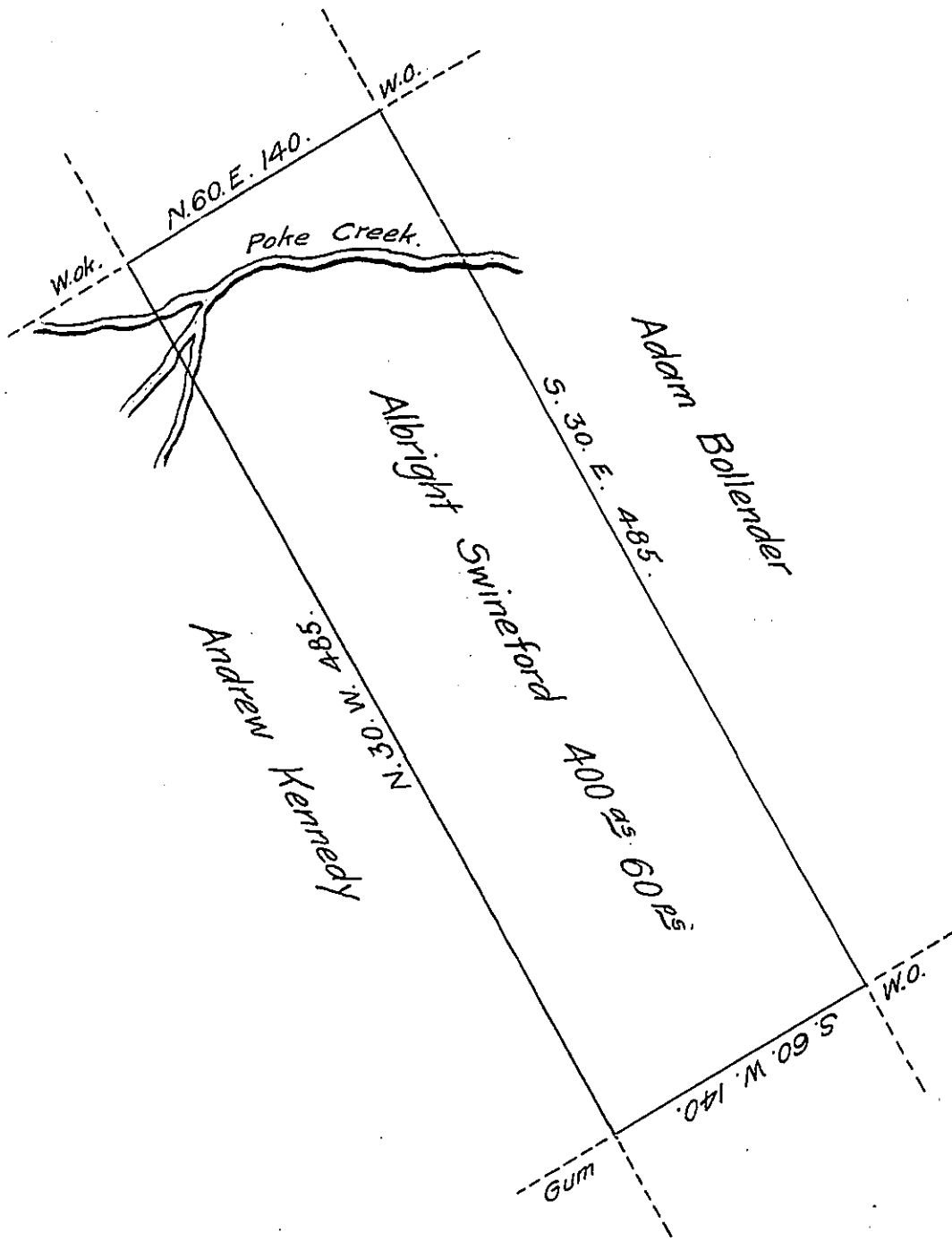


FORM No. 1.



A Draught of a Tract of land Situate in Hains Township County of North-
 umberland Surveyed the 20th Day of July 1794 for Albright Swineford in
 Pursuance of his warrant bearing Date the 25th Day of February 179^(obl)
 Containing Four hundred acres and Sixty Perches & allowance &c.

p^r Frd^l Evans D.S.

To Daniel Brodhead Esquire
 Surveyor General of Pennsylvania. }

IN TESTIMONY that the above is a copy of the original remaining on file in
 the Department of Internal Affairs of Pennsylvania, made
 conformably to an Act of Assembly approved the 16th day of
 February, 1833, I have hereunto set my Hand and caused
 the Seal of said Department to be affixed at Harrisburg,
 this fourteenth day of November 1906.

James N. Hoover
 Secretary of Internal Affairs.